



STAR Conference 'Geosciences, Geoengineering and the Ocean in the Pacific Island Region', Tanoa International Hotel, Nadi, 6-8 June 2016

# PACIFIC CENTRE FOR SOCIAL RESPONSIBILITY AND NATURAL RESOURCES



## Concept Paper Development

Akuila Tawake, John Burton, Glenn Banks, Pierre-Yves Le Meur, Colin Filer, Martyn Namorong, Peter Batchelor

With thanks to PACE-NET+ ThinkTank process, Auckland, 2014

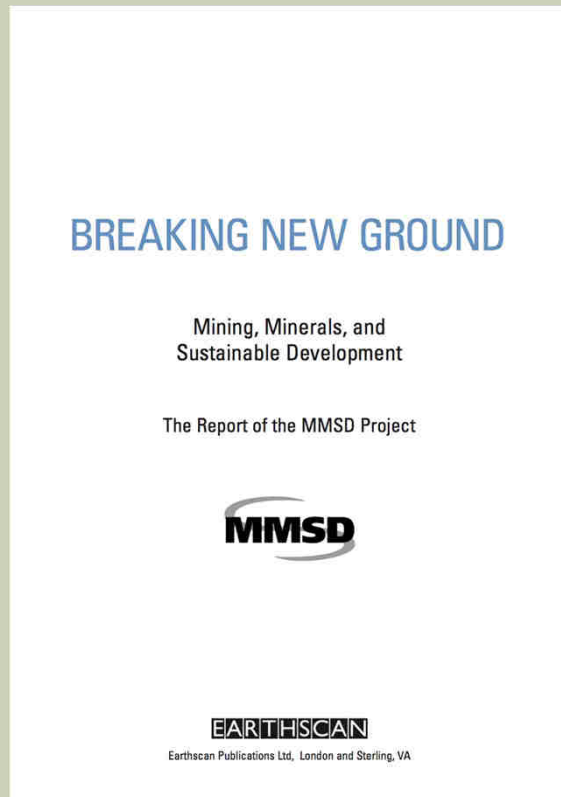


## VISION

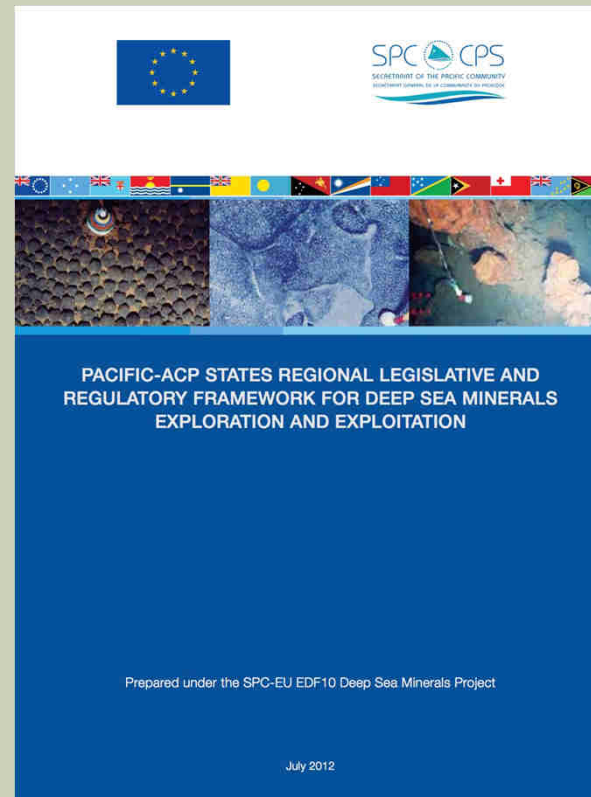
*“To contribute to the improvement of wellbeing of the Pacific Communities through the responsible and sustainable management of the region’s natural resources”*

# SOCIAL RESPONSIBILITY

2002



2012

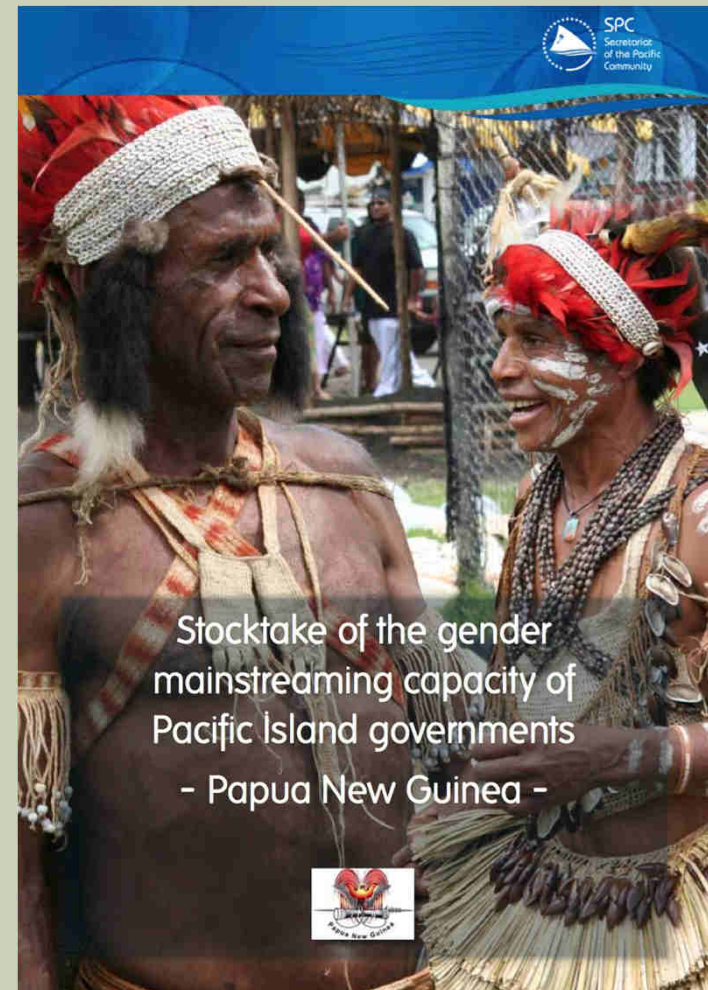


2014



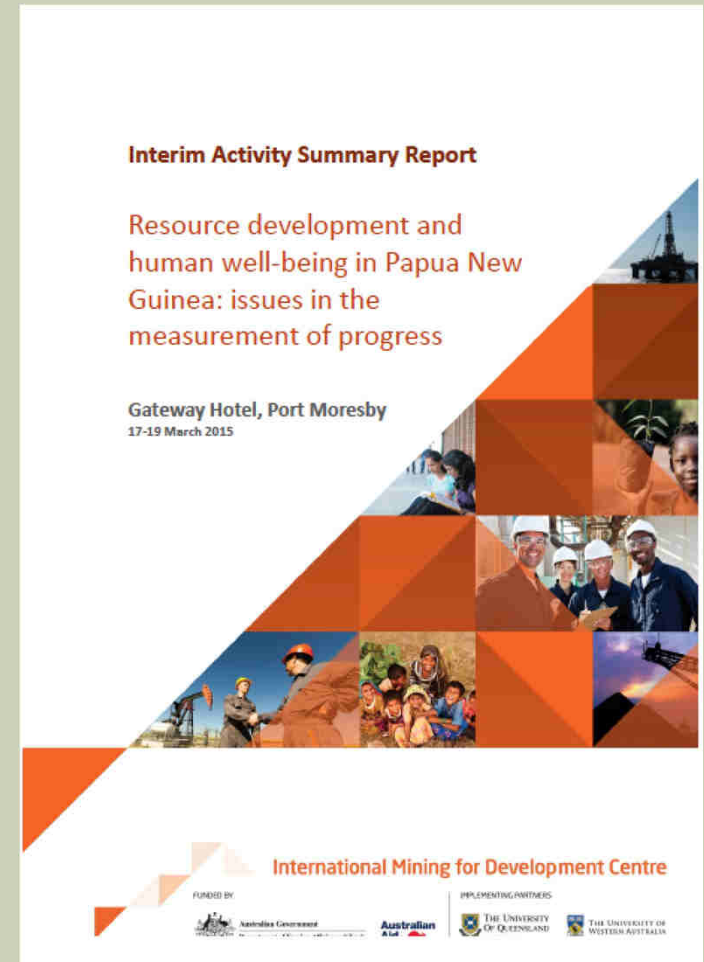
# ADDRESS GAPS IN NATIONAL POLICIES AND CAPACITIES

- Alignment of objectives across government
- Forum for policy dialogue
- Communicate new developments in social responsibility observances
  - Ex1. alignment of gender policies between social development ministries and resource extraction ministries
  - Ex2. culturally appropriate grievance mechanism



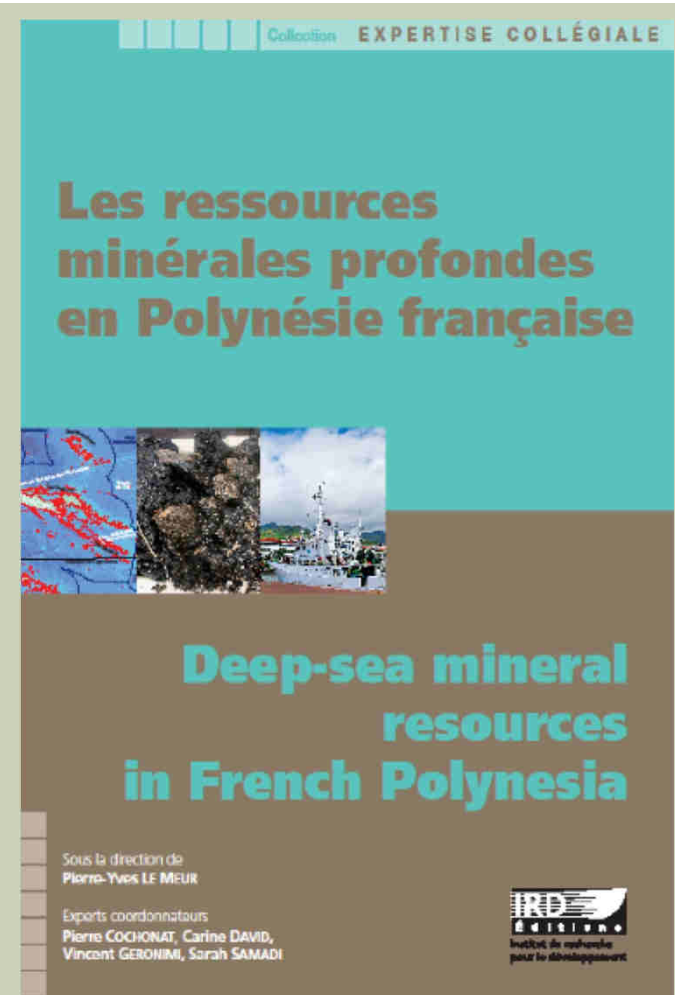
# PUBLIC AND PRIVATE SECTOR TRAINING AND EDUCATION

- Workshops / conferences for practitioners
- Short course training for public servants + private sector staff working in sustainability / community relations areas
  - Social mapping
  - Social impact assessment
  - Land tenure and land management



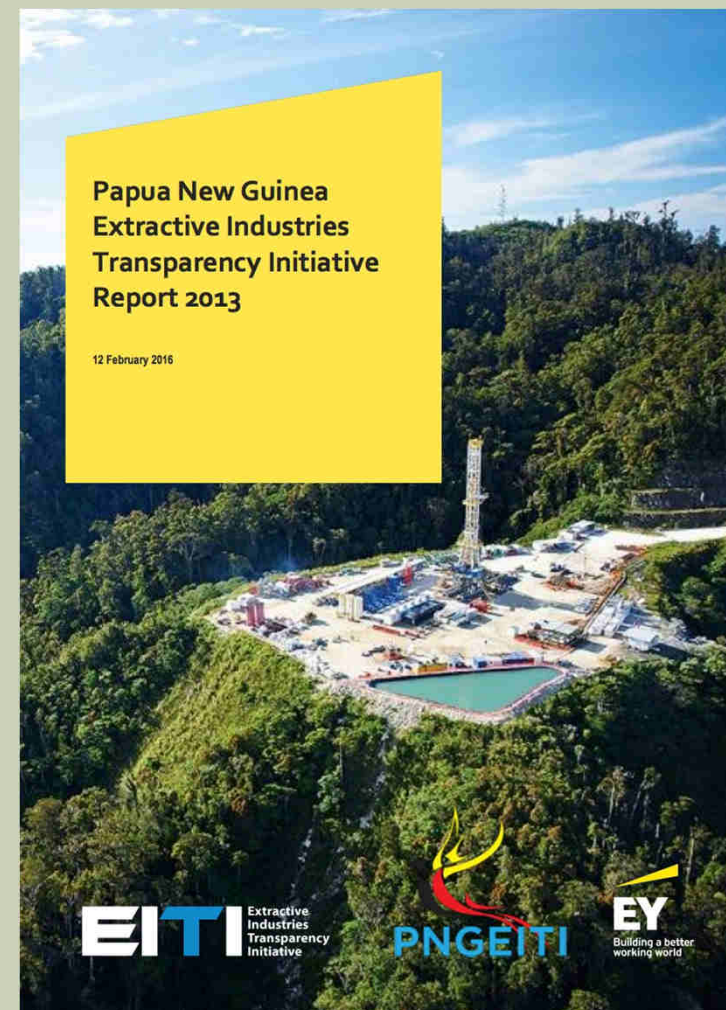
## APPLIED RESEARCH ON SOCIAL RESPONSIBILITY ISSUES

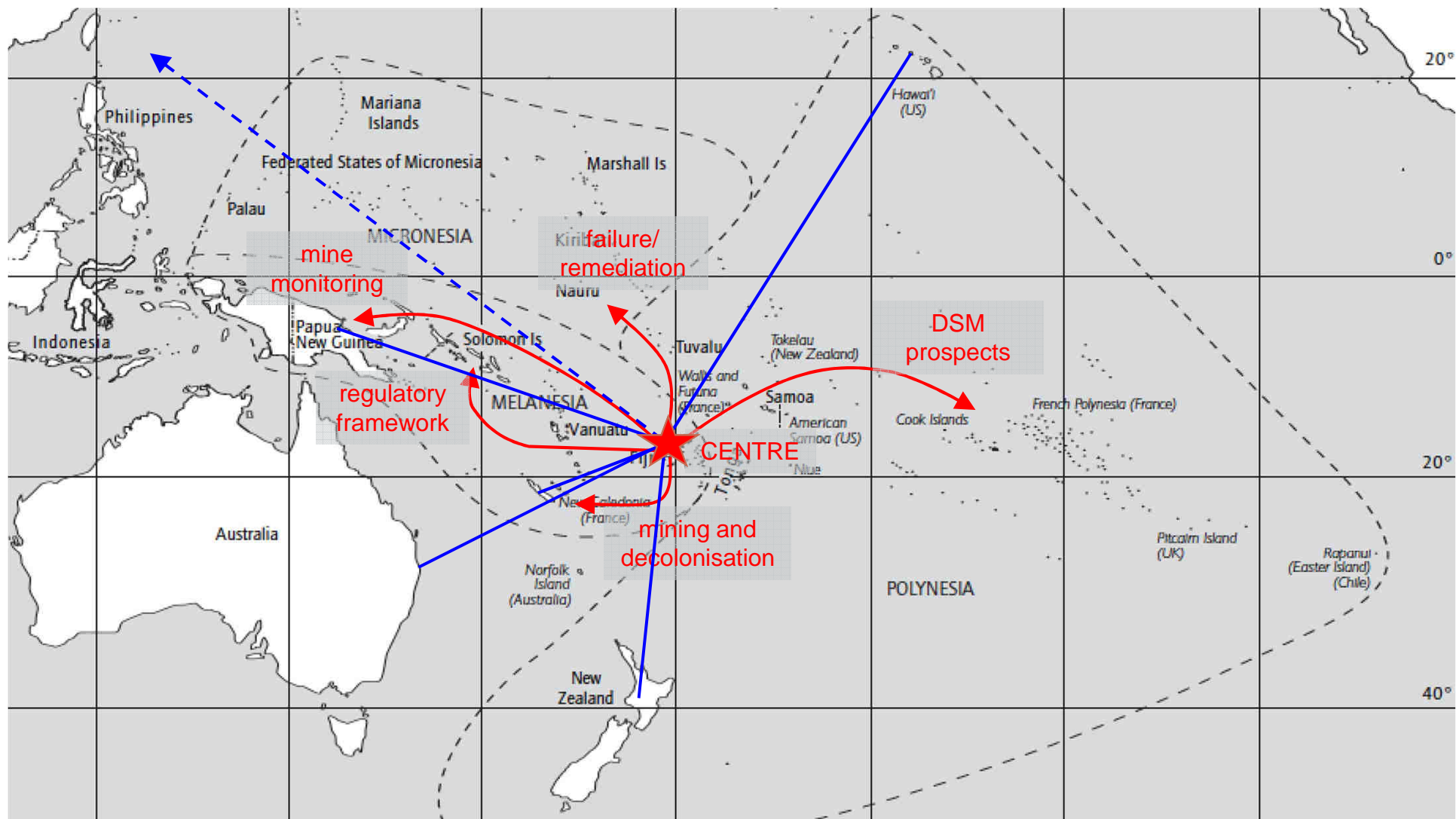
- Hosting and developing collaborative applied research programmes ('expertise collégiale')
- Platform for social and scientific research, open access agreements and impact assessments e-repository
- Linkage with PIURN member universities on sustainability issues
- Technical assistance for social impact assessments and stakeholder identification



## ENGAGEMENT WITH COMMUNITIES AND CIVIL SOCIETY

- Assisting the local implementation of global social responsibility initiatives
- Linkage between / strengthening civil society coalitions at different levels
- Assisting with making agreements, impact assessments and benefit analyses accessible to public audiences in the Pacific
- Harnessing media in fostering dialogue among stakeholders







<b>Who</b>	<b>Where</b>	
<b>Akuila Tawake</b>	<b>Geoscience Division, SPC</b>	<b>akuilat@spc.int</b>
<b>John Burton</b>	<b>Divine Word University Research Centre, Madang, PNG</b>	<b>jburton@dwu.ac.pg</b>
<b>Glenn Banks</b>	<b>School of People, Environment and Planning, Massey University, NZ</b>	<b>G.A.Banks@massey.ac.nz</b>
<b>Pierre-Yves Le Meur</b>	<b>Institut de recherche pour le développement (IRD-GRED), Montpellier, France</b>	<b>pierre-yves.lemeur@ird.fr</b>
<b>Martyn Namorong</b>	<b>Resource Governance Coalition, Port Moresby, PNG</b>	<b>martyn.namorong@cimcpng.org</b>