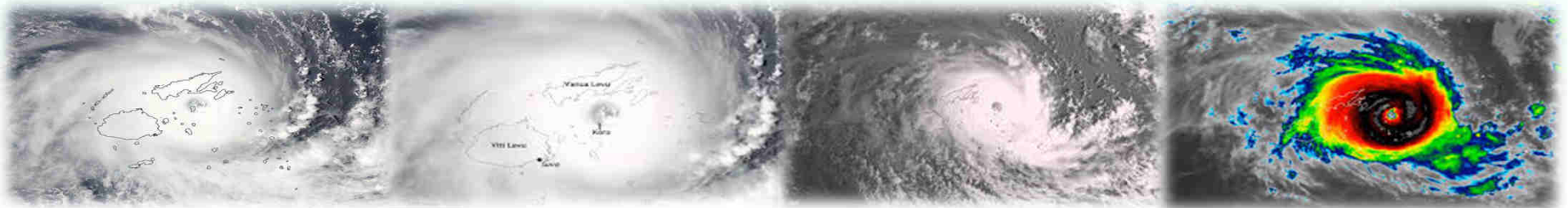




Ministry of Infrastructure & Transport

Severe Tropical Cyclone Winston

Fiji Meteorological Service





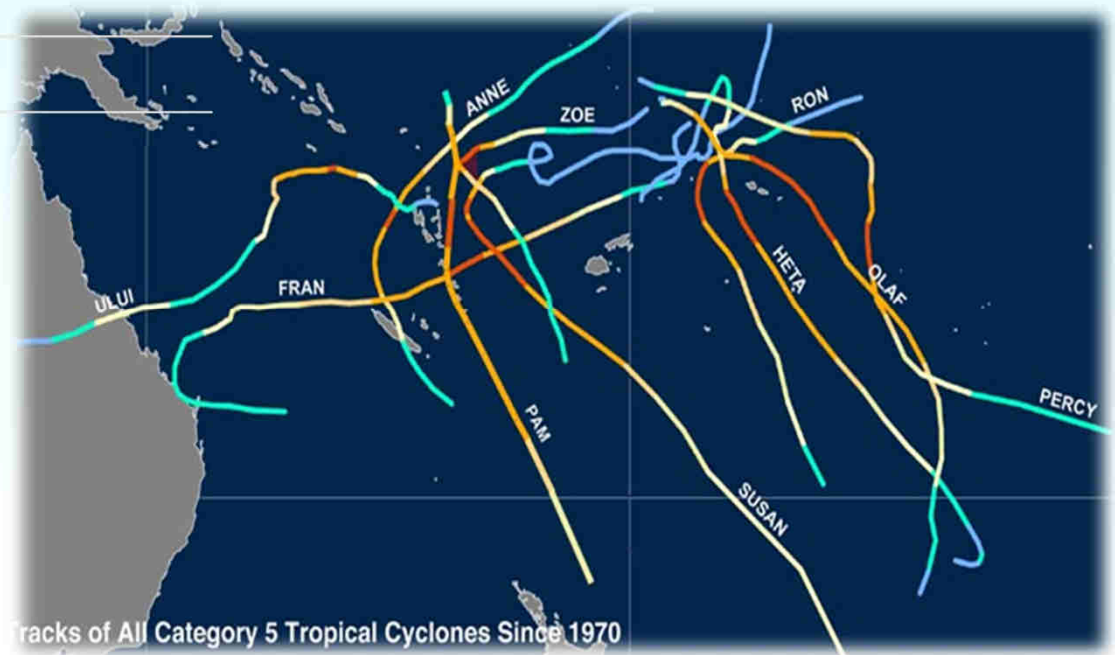
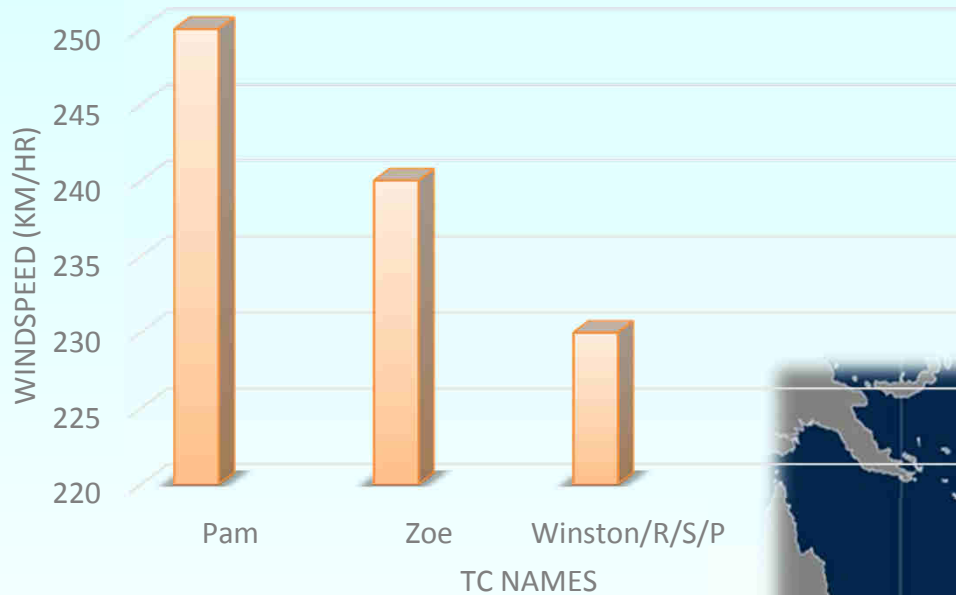
Overview

- History of Severe Tropical Cyclones (TCs)
- Meteorological History of Winston
- Observations
- Impacts
- Final Remarks



History of Severe TCs SW Pacific

Severe TCs in SW Pacific



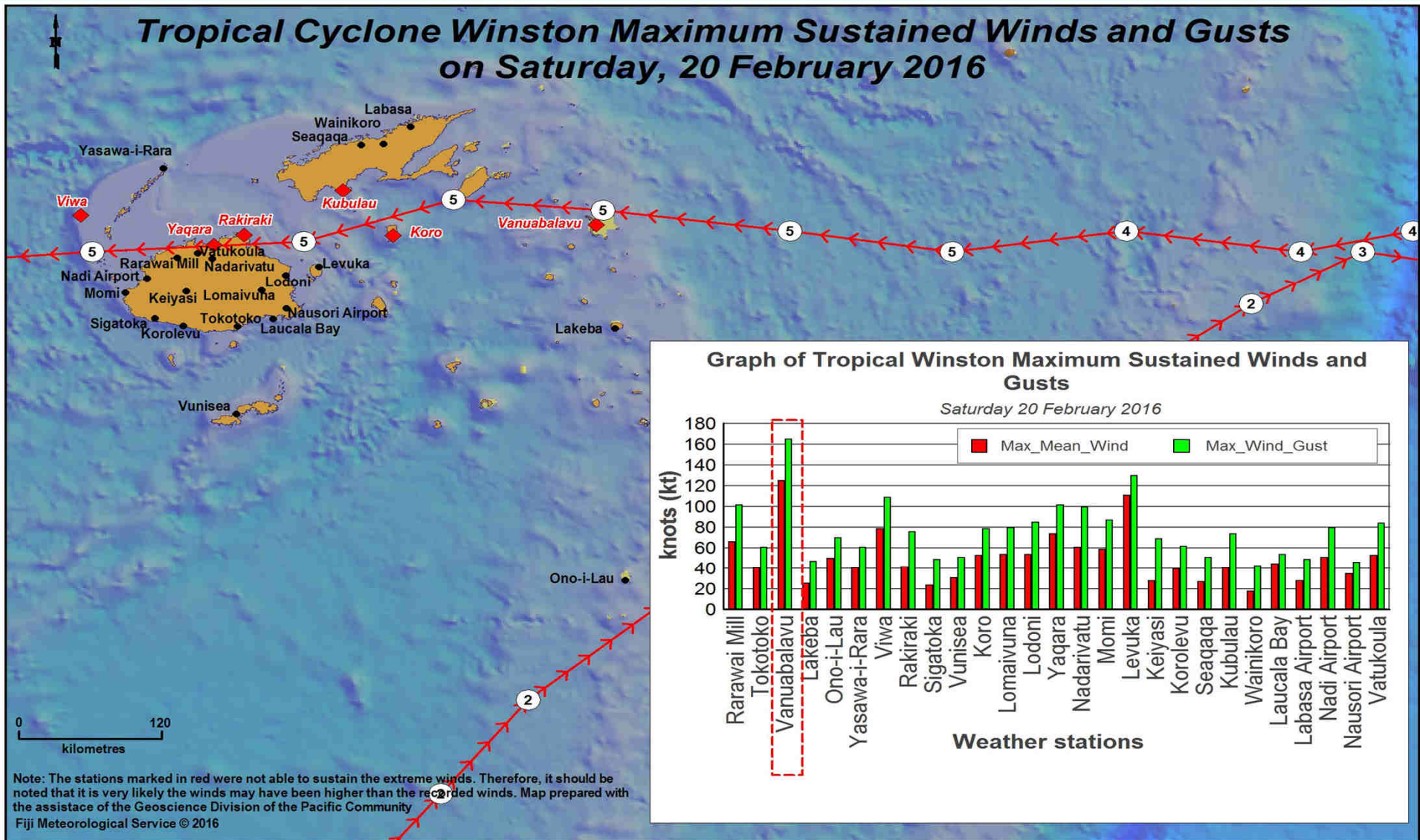


Meteorological History of Winston





Observations - Wind



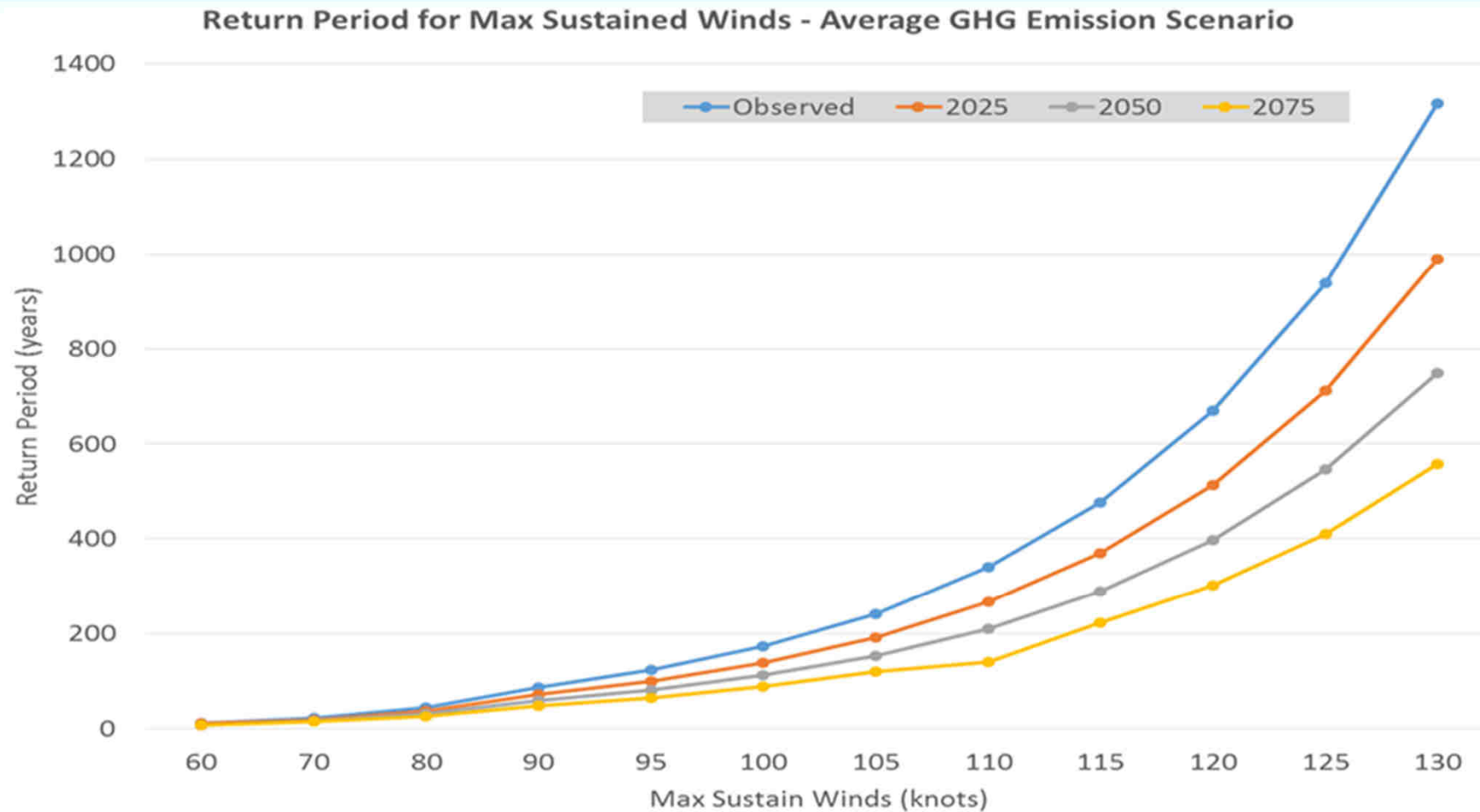


Observations – Rainfall & Pressure

Station	24-hr Rainfall (mm)
Nadarivatu	357.5
Monasavu	308.0
Penang	208.0
Lowest Pressure	929.4hPa



Return Period – Max Winds





Impacts - Met

Force Thirteen - Nadi & Nausori Radar Composite
February 19 2016 16:30:19 UTC
Fiji Region



Kubulau



Wainigata



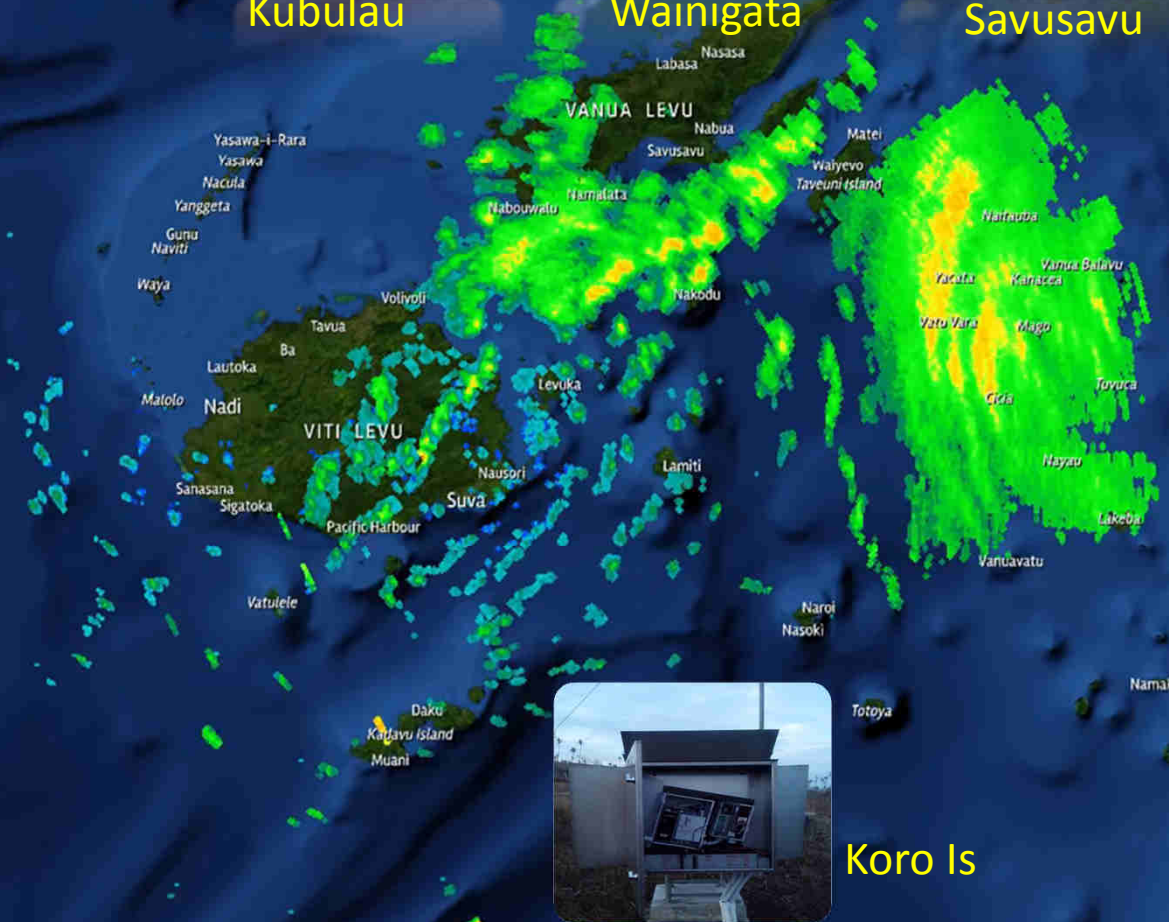
Savusavu



Viwa



Vanuabalavu



Koro Is





Final Remarks

- Severe TC Winston, most powerful cyclone, most costly disaster to ever affect Fiji.
- Vanuabalavu's record, highest to be recorded at a land based station in Fiji.
- Substantial rainfall recorded, flooding in low-lying areas



Thank You



misaeli.funaki@met.gov.fj

terry.atalifo@met.gov.fj